

Beachside bliss "Having previously been in a unit, living here we really appreciate having our own outdoor space and it's so great with the kids," says Nicola, who lives in this Gold Coast abode with her husband, Lachie, and their two children. A facade in Dulux Natural White joins Knotwood Aluminium cladding in Sycamore. >

LEAGUE OF ITS OWN

After buying a bad house on a good street, a Gold Coast couple kicked a home goal when they built their modern family abode

STORY & STYLING KYLIE JACKES | PHOTOGRAPHY LOUISE ROCHE



When searching for a home five years ago, Nicola and Lachie Weller weren't content simply trawling through real estate listings. "We wanted to live in Burleigh close to the beach and were keen on a bigger block, so we letterbox dropped in some of our favourite streets to see if anyone was interested in selling," recalls Nicola. Although their letters went unanswered, it may have planted a seed, as soon after, a house on a generous corner block came up for sale, and they snapped it up.

Buying purely for the location, the intention was to knock down and design a modern family home. Yet, rather than build to the boundary, the couple wanted to keep the yard large, retain the '70s pool and focus on outdoor living and productive gardens, where Lachie, an AFL player for The Gold Coast Suns, could enjoy his downtime cultivating organic produce. "We didn't want to go over the top with the number of rooms or bathrooms; we wanted a home with a modest footprint and to use every part of it," says Nicola.

Taking their time to perfect the design, Nicola and Lachie leased the house for a year, while working with building designer Bianca Gemmill of BCG Building

Design to create the right balance of indoor/outdoor living and streamlined functionality. Husband-and-wife team Nash Building + Interiors also came on board, with builder Clint and interior designer Kellie able to distil the couple's love of natural, earthy materials into a timeless palette.

"Originally, we were considering terracotta pavers and concrete, which had a bit of a Mediterranean feel, yet when Kellie introduced timber and crazy pavers we loved the concept and everything fell into place from there," says Nicola. The minimalist, muted scheme features limestone, travertine, hand-trowelled microcement walls and hardwood timber decking.

During the process, the couple welcomed daughter Marloe and have since celebrated the arrival of one-year-old Rudy. "There's been a bit of room reshuffling, and there are now more toys around the place than ever, but the layout works well for us," says Nicola.

A serene set-up, even when heavily sprinkled with toys, the home functions just as the couple had hoped. "On the weekends, apart from a trip to the beach, we feel we don't need to leave." **HB** For more stunning homes, visit www.homebeautiful.com.au.

Kitchen "It's such a practical space with so much storage and I love that it flows right around behind, to the butler's pantry," says Nicola of her kitchen (this page). Oak cabinetry was the starting point for the palette, followed by 'Pronto' engineered oak floors in Parchment from Marques Flooring. 'Green Bananas and Apricots' by Emma Gale adds artistic flavour. **Cabana** Little Marloe loves playing with Mum, Dad and dog Hazel in the poolside cabana (opposite), crafted from recycled timber telegraph posts. >



INSIDE STORY Nicola & Lachie's home

Who lives here?

Nicola, who describes her style as "minimalist and timeless;" her husband Lachie, an AFL player for the Gold Coast Suns; their kids Marloe, three; Rudy, one; and Hazel the Australian Shepherd.

Best decision you made?

Nicola: "To buy and build in this area. We just love that we can ride and walk to the beach and our favourite cafes."

Did you have any splurges?

"Nothing was too crazy. We nearly did a marble benchtop in the kitchen, but decided to opt for a more family friendly low-maintenance engineered stone."

What's left on your to-do list?

"We're slowly chipping away adding more furnishings, but with two young kids, we're not in a rush."

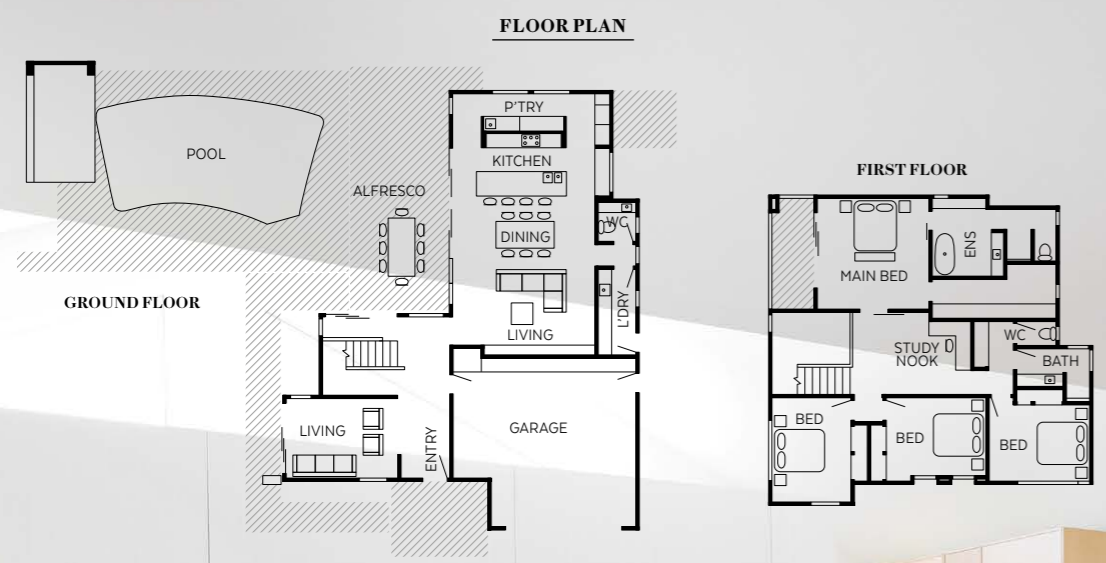
Beautiful HOMES

Kitchen A lovely addition alongside the kitchen (this page & opposite) is a bespoke window seat with integrated storage, where the couple sit and read with the kids or chat while the other is cooking. In keeping with the muted textile of the Globe Interiors blind, the seat by JCF Designs is upholstered in Warwick Fabric 'Chambray' in Oatmeal, and brightened by Bonnie and Neil cushions. The Brodware pull-out mixer in Brushed Nickel complements the Breville 'Barista Touch' coffee machine from Harvey Norman.



WE LOVE... tone on tone

Benchtops in Caesarstone Adamina pair beautifully with tonal Moroccan 'Zellige' tiles in Lily by Vulcano Clay, which add a subtle patchwork effect across the splashback. "We love the mix of materials throughout. The timber, VJ panelling, microcement, stone, limestone and hand-made ceramic tiles," shares Nicola. 'Nalani' woven stools from Inartisan complete the simple, textural palette and tone with the upper cabinetry in oak by Farmers Doors. Find more at farmersdoors.com.



Living & dining area Seamlessly connected to the kitchen and dining spaces, the living area is a snug hub bordered by a modular Trit House sofa, where Hazel comfort tests the Bonnie and Neil cushions. Above the Kira & Kira coffee table and custom jute rug from International Floorcoverings Australia are portraits of Lachie, Marloe and Hazel by Sabine Bannard. Paired with James Lane chairs, the Empire Home timber dining table is a memento from the couple's time in Western Australia, after a stint living there while Lachie played for the Fremantle Dockers. >





“WE REALLY LOVE THE HOME WE’VE CREATED AND SEE OURSELVES HERE FOR THE FORESEEABLE FUTURE”

NICOLA, HOMEOWNER



Living area Integrated shelves provide additional opportunities for display in the main living space (top left) and help keep breakable items out of reach from tiny hands. Nearby hang framed photographs by Sabine Bannard of Nicola, Marloe and Hazel, who gets comfy on the Trit House sofa (top right). The couple set up a kids’ play table with cute pint-sized furniture from Cowrie & Conch (opposite).

Sitting area A Yolán Eke artwork from Kira & Kira offers colour cues in the separate sitting area, which opens onto the garden and basks in warm afternoon sun (left). Opting for a textural mix of furnishings, a pair of ‘French Modernist’ armchairs in woven water hyacinth from Larkwood Furniture accompanies the timber coffee table from Kira and Kira. The relaxing corner is illuminated by a floor lamp sourced at MCM House, atop a wool rug from Globe West. >



Ensuite The kids love splashing in the 'Naga' bath from BNK Bathrooms & Kitchens in the couple's ensuite (this page & opposite, bottom left), where microcement by Kustomcote skims the bench seat and vanity. "The microcement really appealed as I love the look and there's no grout to clean," says Nicola. The flooring is Eco Outdoor 'Arbon' tumbled limestone, with Ragno 'Mélange' wall tiles in Beige from Three Balls Red. With a neutral foundation, colour is easily added and changed with towels, like these Turkish Cotton ones from Adairs. **Main bedroom** The couple's bedroom (opposite, top left & right) is luxe with Dunlin 'Narrow Rattan' sconces, a Jordan bed and Halcyon Lake 'Heathers' carpet in Parchment. Sheer curtains from Globe Interiors diffuse early morning sun on the rare days they get a sleep in. **Guest bedroom** Visitors are treated to bedding from H&M and Castle (opposite, bottom right). >



“THE PLACE CAME
TOGETHER FLUIDLY
BASED ON THE BRIEF
FOR A NEUTRAL
COLOUR SCHEME”
KELLIE, INTERIOR DESIGNER

Pool Too good not to reuse, the existing pool was simply updated with new pebblecrete, Eco Outdoor ‘Scala’ travertine crazy paving, a modern fence and a cabana that provides a shady retreat within the splash zone. Topped with a mix of cushions from H&M and Adairs, the custom upholstered bench seat features 3 Beaches fabric. To one side, silvery olive trees enhance the Mediterranean feel. >



SOURCE BOOK

Interior design & building: Nash Building + Interiors, nashbuildingandinteriors.com.au.

Building design: BCG Building Design, bcgbuildingdesign.com.au.

Joinery: Smart Joinery, smartjoinery.com.au.

Landscaping: JSW Landscapes & Design, and Nash Building + Interiors.

Alfresco Stacking doors link the kitchen with the outdoor dining area – one of the family’s favourite spots to unwind near the pool and backyard (this page). Lachie and Marloe harvest homegrown goodies from the garden beds (opposite). “Being in the garden and growing produce really is Lachie’s passion,” says Nicola. “There are always greens and a seasonal mix of vegies, which we pick fresh and cook with daily – it means we rarely need to buy any.”

